

WOOD CHIPS



Northwest Indiana Woodworkers Association

Volume 15, Issue 10 October 2011

President's Corner

Hi fellow woodworkers, Hope you are enjoying this weather. It's time to finish up the toy making. Next month all the Santa's helpers bring the toys to the meeting. It's amazing how many wonderful toys are made! If you have a charity that can use the toys, please let Claudia Brazil know. Claudia and Skip are the Elves in Charge! They do a fine job too! Thanks! The Educational drawing is this month. If you still have tickets out please turn in the money and tickets to Lou Takacs, Norm Johnson or Ron Benson.

When you get a chance check out our web page: <http://niwoodworkers.org/>. John Hunter is updating it regularly. We'd love to hear from you also. Critique a tool, review a show or website. It's great to know if a tool works and is worth the price before we go out to buy it. There is also links to other sites. Great work John!

See you at the membership meeting.
Make fine saw dust

Marcia Lichnerowicz

RAFFLE DRAWING

The club raffle drawing will take place at the October meeting on October 27th at Hidden Lake. Be sure and bring any tickets that you have sold and turn them in. Winners need not be present. All winners will be listed in the next news letter and contacted by phone.

SHOW AND TELL



Marcia Lichnerowicz



John Hunter



Mick King



Skip Brazil



Carol Metzger



Dick Sader



Ken Woolard



Bob Miller



Max Hernick



Clyde Hewlett



Bob Rinearson

SINDELAR MUSEUM FIELD TRIP

Photo's curtsy of Kevin Sturgeon





FIELD TRIP TO TWO OLD GUYS SAWMILL

Thanks to Ken Woolard for setting up this field trip for the club.

The sawmill visit will be on October 29 at about 1:00 pm

Two Old Guys Sawmill
2522W 1450N
Wheatfield In
219-309-4439

Lead Sawyer is John "Toby" Kiraly

To get to 1450 you have to turn off SR49 at 1500, it will take you to 1450
any questions my phone no. is 219 262 9270 or email me at kenwoolard@yahoo.com

Ken

Those of us from the northern area will meet in Valparaiso at the Wal-Mart parking lot NW corner at noon and will leave at 12:30. This is the Wal-Mart on US 30 near Rt.49.

Directions



Merge onto IN-49 S.

Turn right onto W County Road 1500 N.

W County Road 1500 N is 0.9 miles past W County Road 1600 N

If you reach E County Road 1400 N you've gone about 1.0 mile too far

W County Road 1500 N becomes W County Road 1450 N.

2522 W 1450 N.

If you reach N County Road 300 W you've gone about 0.1 miles too far

FOR SALE

Grizzly Wet Grinder Model T10010

	Purchase Price	Reason For Selling
Purchased Dec. 2008	\$159.95	Used very little (idle for 18 Months). No room for permanent (use-full) set-up. Prefer slow speed grinder.
<u>Accessories</u>		Slow speed grinder good enough for lathe tools.
Kit #1	\$59.95	
Diamond Dresser	\$10.95	
Kit #2	\$44.95	

Selling Price: All for \$125.00

Contact: Joe McDaniel 708-710-9616

ITEMS FOR SALE

If you have any wood working related items that you wish to sell through the newsletter please contact Lalo Gonzalez LaLogon@sbcglobal.net or John Hunter john.b.hunter@frontier.com Include a description and the price you are selling them for, also how you may be contacted.

CALENDAR OF EVENTS

2011

- October 18th Committees Meeting at Hidden Lake 7:00 PM
- October 27th Membership Meeting at Hidden Lake 7:00 PM Finishing Lou Takacs
- October 29th Saw Mill Field trip 12:30 PM Meet at Wal-Mart Valpo parking lot
- November 15th Committees Meeting at Hidden Lake 7:00 PM
- November 17th Membership Meeting at Hidden Lake 7:00 PM Toy Program
- December 20th Committees Meeting at Hidden Lake 7:00 PM
- December 22nd Membership Meeting at Hidden Lake 7:00 Christmas Party, Installation and Awards

CALENDAR OF EVENTS

2012

- January 2nd Executive Board Meeting at Portage Library 7 PM
- January 17th Committees Meeting at Hidden Lake 7:00 PM
- January 26th Membership Meeting at Hidden Lake 7:00 PM Silent Auction
- February 21st Committees Meeting at Hidden Lake 7:00 PM
- February 23rd Membership Meeting at Hidden Lake 7:00 PM Shop Jigs & Jesse Day Chair Weaving
- March 20th Committees Meeting at Hidden Lake 7:00 PM
- March 23rd Membership Meeting at Hidden Lake 7:00 PM Garry Graves Kreg Jigs
- April 2nd Executive Board Meeting at Portage Library 7 PM
- April 17th Committees Meeting at Hidden Lake 7:00 PM
- April 26th Membership Meeting at Hidden Lake 7:00 PM
- May 15th Committees Meeting at Hidden Lake 7:00 PM
- May 24th Membership Meeting at Hidden Lake 7:00 PM
- June 19th Committees Meeting at Hidden Lake 7:00 PM
- June 28th Membership Meeting at Hidden Lake 7:00 PM
- July 2nd Executive Board Meeting at Portage Library 7 PM

July 17th Committees Meeting at Hidden Lake 7:00 PM
July 26th Membership Meeting at Hidden Lake 7:00 PM
August 21st Committees Meeting at Hidden Lake 7:00 PM
August 23rd Membership Meeting at Hidden Lake 7:00 PM
September 18th Committees Meeting at Hidden Lake 7:00 PM
September 27th Membership Meeting at Hidden Lake 7:00 PM
October 1st Executive Board Meeting at Portage Library 7 PM
October 16th Committees Meeting at Hidden Lake 7:00 PM
October 25th Membership Meeting at Hidden Lake 7:00 PM
November 20th Committees Meeting at Hidden Lake 7:00 PM
November 15th Membership Meeting at Hidden Lake 7:00 PM Toy Program
December 18th Committees Meeting at Hidden Lake 7:00 PM
December 20th Membership Meeting at Hidden Lake 7:00 PM Christmas Party, Installation and Awards

Bob Flexner's Finishing Tips

<http://www.thefinishingstore.com/>

TIP: Finishing a Cedar Chest

You shouldn't finish the inside of a cedar chest. Leave it totally unfinished. The reasons are, first, you don't want to seal in the cedar aroma that protects against moths, and second, the cedar fumes will destroy (soften to the point of stickiness) most finishes.

If the outside of the chest is also cedar, you may have problems getting oil, varnish or polyurethane to dry well. If you want to use one of these finishes, apply a sealer coat of shellac first. For example, use SealCoat, available from paint stores.

If the outside is any wood but cedar, you can use any finish. So choose one you're familiar with or that will give you the look and durability you want.

HUMOR

An elderly woodworker was stopped by the police around 2 AM and was asked where he was going at that time of night.

The man replied, "I'm on my way to a lecture about alcohol abuse and the effects it has on the human body, as well as smoking and staying out late."

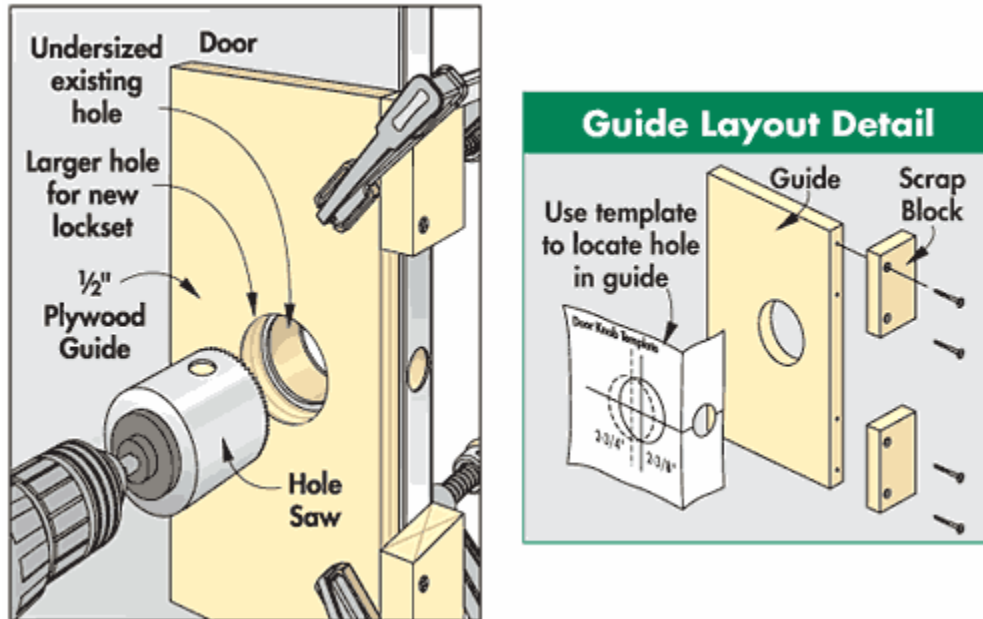
The officer then asked, "Really? Who's giving that lecture at this time of night?"

The man replied, "That would be my wife."

Use a Simple Guide to Enlarge a Lockset Hole

When I need to enlarge a hole in a door for a new lockset (say, from $2\frac{1}{8}$ " to $2\frac{3}{8}$ "), I use a shop-made guide and a standard hole saw.

The guide is a scrap piece of $\frac{1}{2}$ " plywood with a hole that's sized to accommodate the lockset. Use the paper template that comes with the lockset to locate the hole in the guide (*Guide Layout Detail*).



After cutting the hole with a hole saw, align the guide on the door. (I attach scrap blocks to the guide to register it flush with the edge.) Now clamp the guide in place, and use the same hole saw to enlarge the opening in the door. The guide keeps the hole saw straight, ensuring an accurate cut.

Good woodworking,

Wyatt Myers
Online Editor, *Workbench*

NEWSLETTER EARLY THIS MONTH

The club newsletter is out early this month, I will be at the Covered Bridge Festival until just before the October 27th meeting so I had to send it out early.

John Hunter