

WOOD CHIPS



Northwest Indiana Woodworkers Association

Volume 27, Issue 2 February 2022

President's Rambling's

Greetings Fellow Woodworkers, I hope everyone is doing well. February is Jigs and Fixtures program. It is time to bring out that special JIG and or FIXTURE that you have made or use to help you in your shop. Program for March will feature our district representative for Freud Tools. April is our great 2 x 4 Challenge. Now is the time to work on your challenge project. Our Program Chairman needs our help to fill some openings in our 2022 calendar. If you have specialized skills in an area of woodworking and want to share that skill at an upcoming meeting please contact Jeff or myself. We need you to step up if you can. Upcoming programs: February's Program is SHOP JIGS. March Program Freud Tools. April Program is the 2 x 4 Challenge. Any and all ideas for programs would be greatly appreciated.

For those that want to get out for the day and check out some CNC equipment, Burl from Digital Wood Carver is holding an Open House at his new location in Martinsville, Indiana. Julie and I visited his other location a few years ago that was at his home. We have not seen his new location in Martinsville. Hours is Noon till 4 PM Eastern Time. Also we will take this opportunity to continue down to Bloomington IN. to visit Oliver winery.

SATURDAY, FEBRUARY 26, 2022 AT 10:45 AM CST

Digital Wood Carver Open House

189 W Walnut St, Martinsville, IN 46151, United States

Come visit our new factory and showroom in Southern Indiana during our Open House! See new CNC products and get hands-on with hobby, professional and commercial CNCs!

189 W Walnut St, Martinsville, IN 46151 -

February 26, 2022

Noon – 4pm Eastern Time

Remember April is the 2x4 challenge! It is time to start working on your 2x4 project for 2022.

Upcoming events: The Woodworking Shows has gone virtual. Starting in March on each Friday and Saturday they will be featuring seminars online. For more information check their website www.thewoodworkingshows.com

Raffle tickets are now available.

Renew your membership now and earn your early bird credit.

Enjoy this weather and Don't let your tools rust!

Your President, Kevin Sturgeon

From the Treasurer

Well, it is early dues time if you want to earn an achievement point, at the February meeting.

So far 6 members are paid up. Club dues are still only \$25.00 per year and \$35.00 for couples. I hope all is well with everyone. I know some of our elderly members can't come to some meetings because of driving at night. That is why your club sends out a newsletter on line and to some in the mail.

Also at the February meeting your club will be implementing our annual raffle ticket fundraiser. I hope we can have another great year. This raffle program is very necessary for your club to keep going. Your club dues really are not enough to pay for everything. The cost of running the club is mostly your dues. The raffle program helps pay for things like our toy program, picnic, Christmas party, coffee, supplies for many miscellaneous items. your club needs all members to petiolate in selling raffle tickets. Thank you, Ron Benson, Treasurer

From Member John Fluck Free Wood

I have some 2x4 cut off's that can be used for making toy cars, if anybody would like any, please let me know and, I will bring them to the meeting.

I can be reached at jfluck@aol.com or 219-781-1619

John Fluck

SHOW AND TELL



Kevin Sturgeon



Rodney Foster



Bill Schoech



Susan Bunce

ITEMS FOR SALE

If you have any wood working related items that you wish to sell through the newsletter please contact John Hunter john.b.hunter@frontier.com Include a description and the price you are selling them for, also how you may be contacted.

If you are looking for a tool that another member would like to sell you can place a wanted ad in the newsletter, just contact John Hunter at john.b.hunter@frontier.com

2022

February 24th Membership Meeting at Moose Lodge, 143 South Hobart Road, Hobart IN

7:00 PM Shop Jigs

March 16th Committees Meeting at Moose Lodge, 143 South Hobart Road, Hobart IN

7:00 PM

March 24th Membership Meeting at Moose Lodge, 143 South Hobart Road, Hobart IN

7:00 PM

April 4th Executive Board Meeting at Portage Moose Lodge on County Line Road

April 20th Committees Meeting at Moose Lodge, 143 South Hobart Road, Hobart IN

7:00 PM

April 28nd Membership Meeting at at Moose Lodge, 143 South Hobart Road, Hobart IN

7:00 PM 2 x 4 Challenge

May 18th Committees Meeting at Moose Lodge, 143 South Hobart Road, Hobart IN

7:00 PM

May 26th Membership Meeting at Moose Lodge, 143 South Hobart Road, Hobart IN

7:00 PM

June 15th Committees Meeting at Moose Lodge, 143 South Hobart Road, Hobart IN

7:00 PM

June 23th Membership Meeting at Moose Lodge, 143 South Hobart Road, Hobart IN

7:00 PM

July 11th Executive Board Meeting 5 PM at Portage Moose Lodge on County Line Road

July 7th Set Up Club Booth at Steam Show 3 PM

July 8th – 10th Club Booth at the Steam Show at Lake County Fair Grounds

July 20th Committees Meeting at Moose Lodge, 143 South Hobart Road, Hobart IN

7:00 PM

July 28nd Membership Meeting at Moose Lodge, 143 South Hobart Road, Hobart IN

7:00 PM

August 4th Set Up Club Booth at Lake County Fair 9 PM

August 5th – 8th Club Booth at Lake County Fair 10 AM – 10 PM

August 17th Committees Meeting at Moose Lodge, 143 South Hobart Road, Hobart IN

7:00 PM

August 13th Club Picnic at Moose Lodge, 143 South Hobart Road, Hobart IN

12:00 Noon

August 19th Setup booth for Porter County Harvest Festival

August 20th – 21st Porter County Harvest Festival 11:00 AM to 5: PM

August 25th Membership Meeting at Moose Lodge, 143 South Hobart Road, Hobart IN

7:00 PM
September 14th Committees Meeting at Moose Lodge, 143 South Hobart Road, Hobart IN
7:00 PM
September 22nd Membership Meeting at Moose Lodge, 143 South Hobart Road, Hobart IN
7:00 PM Program Favorite/Least Favorite tools
October 3rd Executive Board Meeting 5 PM at Portage Moose Lodge on County Line Road
October 19th Committees Meeting at Moose Lodge, 143 South Hobart Road, Hobart IN
7:00 PM
October 27th Membership Meeting at Moose Lodge, 143 South Hobart Road, Hobart IN
7:00 PM
November 9th Committees Meeting at Moose Lodge, 143 South Hobart Road, Hobart IN
7:00 PM
November 17th Membership Meeting at Moose Lodge, 143 South Hobart Road, Hobart IN
7:00 PM Toy Program
December 7th Committees Meeting at Moose Lodge, 143 South Hobart Road, Hobart IN
7:00 PM
December 15th Membership Meeting at Moose Lodge, 143 South Hobart Road, Hobart IN
6:00 PM Christmas Party, Installation and Awards

Bob Flexner's Finishing Tips

<http://www.thefinishingstore.com/>

TIP: Thin Coats vs. Thick, Which Is Better and Why?

It's common to hear the instruction that it's better to apply several thin coats than one thick one. Why is this so? Or is it?

What's involved is drying time, nothing more. Thinner coats of all finishes dry faster than thicker coats. The difference is great enough that you can build the same thickness with several thin coats in less time than you can get that thickness with a thick coat. But the thick coat will eventually dry just as hard and perform just as well as many thin coats.

Shellac and lacquer dry entirely by solvent evaporation. The solvent evaporates much quicker from a thinly applied coat than from a thick coat because it takes much more time for the solvent at the bottom of the thick coat to work its way up through the finish and out into the air.

Varnish, including polyurethane varnish, dries by the crosslinking of the molecules in the presence of oxygen. It takes much longer for oxygen to work its way to the bottom of a thickly applied varnish than a thin varnish coat.

Water-based finish dries by both solvent evaporation and some crosslinking, so the result is the same. It takes much more time for a thick coat to dry than several thin coats.

Of course, oil finishes don't dry hard at all, so coats must always be as thin as possible, accomplished by wiping off all the excess.

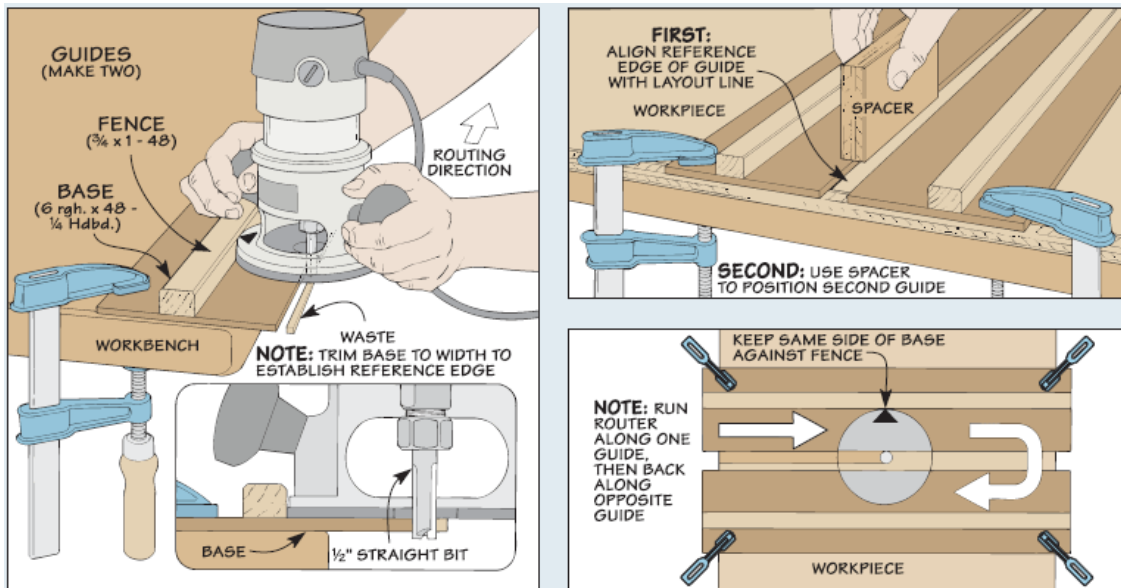
Custom-Fit Dadoes

Routing dadoes or grooves to hold a plywood panel can be a challenge. The problem is it measures a little less than the stated thickness. Whenever I need to rout a perfectly sized dado to match a piece of plywood, I turn to a pair of guides like those shown in the photo below.



The guides consist of a hardboard base with a fence on top. I use the router and a 1/2" straight bit to trim the base of the guide.

Once you've made the guides, using them is straightforward. You can use a combination square to set one of the guides square to the edge of the workpiece. Then place a plywood spacer alongside the guide and clamp the second guide against the spacer.



Now, you can rout along one edge guide then turn the router around and make a return pass to complete the dado.

Good woodworking, Phil Huber Editor, *ShopNotes*