

WOOD CHIPS



Northwest Indiana Woodworkers Association

Volume 19, Issue 12 December 2015

President's Ramblings

Greetings Fellow Woodworkers, Wow this month has caught me so off guard, so much to do and so little time. I have been making gifts for our Annual Christmas party and I need to make some more puzzles for my Grandchildren. And if that's not enough the supplies have been coming in for the Pen Turning Class in January. Just discovered a hiccup in an order that has to be returned. So little time.

Pen Turning Class: I have been working on some new, for me, techniques to share. So far the expense for the class is \$40.00. That will cover 2 pen blanks, 2 pen kits and hall rental. Scheduled for Saturday, January 30th. I need to work with the hall management to find out what time we can start, how long we have the hall, and setup / break down times. If there is any interest I can do a program in 2016 on the process in how to stabilize and dye Punky wood. I will have a sign up sheet for the class and a sheet Mini/Midi for loaner lathes. If there is enough interest I would be willing to do another class at a later date.

We had a great turn out of support at the November meeting with the Toy Program. Thank You everyone that participated, every gift counts at this time of year. As discussed at the last meeting, we will need to order more wheels and axles to continue the Toy Program.

Christmas Party: This is the last general club meeting for 2015 coming up on [Thursday, December 17th at 6 P.M.](#) **Please Note: This is an hour, and a week earlier than our normal meeting time and date due to Christmas Eve.** Please bring your favorite covered dish to share with everyone and some gifts to give to our ladies. We always have wonderful selection of foods. The Club will be providing the meats and soft drinks but other drinks are available in the social quarters. We will be in the large hall.

The Installation of officers for 2016 will be held at this meeting followed by a great dinner.

PRESIDENT – KEVIN STURGEON
VICE PRESIDENT – MIKE CLARK
TREASURER – RON BENSON
SECRETARY - JOHN HUNTER

Upcoming events: The Woodworking Shows, Indianapolis is January 15th – 17th 2016.
The Woodworking Shows, Milwaukee, WI is March 11th – 13th.

Club Event: Duneland Carver Show April 2nd – 3rd.
Enjoy this weather and Don't let your tools rust!

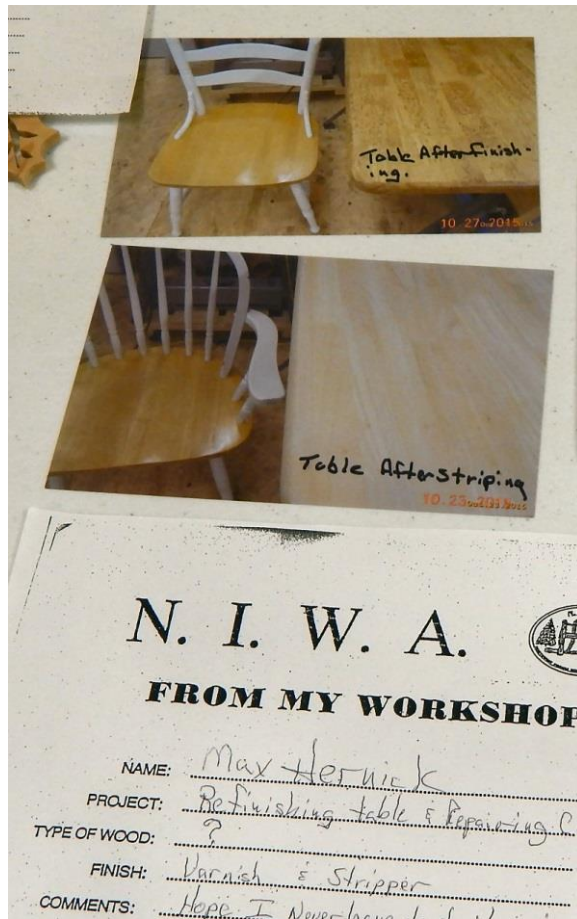
Your President,

Kevin Sturgeon

SHOW AND TELL



Bill Schoech



Max Hernick



Frank Berzins



Rodney Foster



John Hunter

TOYS FOR KIDS PROGRAM





ITEMS FOR SALE

If you have any wood working related items that you wish to sell through the newsletter please contact John Hunter john.b.hunter@frontier.com Include a description and the price you are selling them for, also how you may be contacted.

If you are looking for a tool that another member would like to sell you can place a wanted ad in the newsletter, just contact John Hunter at john.b.hunter@frontier.com

CALENDAR OF EVENTS

2015

December 15th Committees Meeting at 2949 Willowcreek Rd, Portage 7:00 PM
December 17th Membership Meeting at 208 South Linda Street, Hobart IN 6:00 PM
Christmas Party, Installation and Awards

CALENDAR OF EVENTS

2016

January 11th Executive Board Meeting 7 PM at 2949 Willowcreek Rd, Portage
January 19th Committees Meeting at 2949 Willowcreek Rd, Portage 7:00 PM
January 28th Membership Meeting at 208 South Linda Street, Hobart IN 7:00 PM

Silent Auction

February 16th Committees Meeting at 2949 Willowcreek Rd, Portage 7:00 PM
February 25th Membership Meeting at 208 South Linda Street, Hobart IN 7:00 PM

Shop Jigs

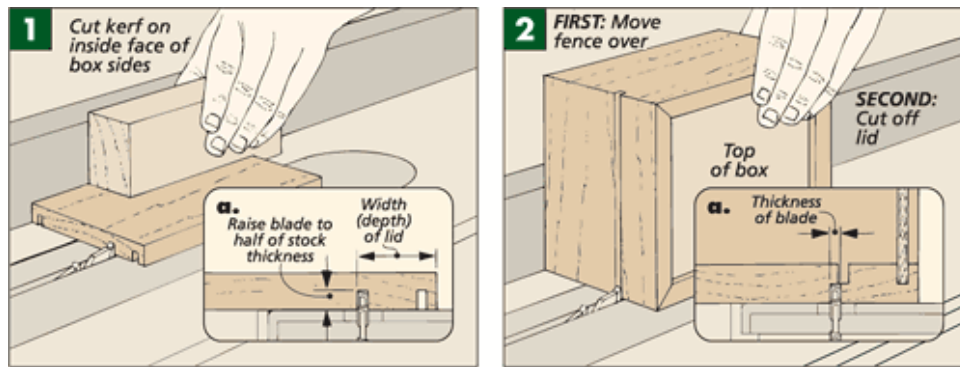
March 15th Committees Meeting at 2949 Willowcreek Rd, Portage 7:00 PM
March 24th Membership Meeting at 208 South Linda Street, Hobart IN 7:00 PM
April 1st Setup Club Booth for Duneland Caver's Show
April 2nd & 3rd Club Booth at Duneland Caver's Show
April 4th Executive Board Meeting 7 PM at 2949 Willowcreek Rd, Portage
April 19th Committees Meeting at 2949 Willowcreek Rd, Portage 7:00 PM
April 28th Membership Meeting at 208 South Linda Street, Hobart IN 7:00 PM
2 x 4 Challenge
May 17th Committees Meeting at 2949 Willowcreek Rd, Portage 7:00 PM
May 26th Membership Meeting at 208 South Linda Street, Hobart IN 7:00 PM
June 21st Committees Meeting at 2949 Willowcreek Rd, Portage 7:00 PM
June 23rd Membership Meeting at 208 South Linda Street, Hobart IN 7:00 PM
July 11th Executive Board Meeting 7 PM at 2949 Willowcreek Rd, Portage
July 19th Committees Meeting at 2949 Willowcreek Rd, Portage 7:00 PM
July 28th Membership Meeting at 208 South Linda Street, Hobart IN 7:00 PM
August 4th Set Up Club Booth at Lake County Fair 9 PM
August 5th – 8th Club Booth at Lake County Fair 10 AM – 10 PM
August 16th Committees Meeting at 2949 Willowcreek Rd, Portage 7:00 PM
August 25th Membership Meeting at 208 South Linda Street, Hobart IN 7:00 PM
August 27th Club Picnic at Post 260, 5675 Mulberry St. Portage IN 46368 12 Noon
September 20th Committees Meeting at 2949 Willowcreek Rd, Portage 7:00 PM
September 22nd Membership Meeting at 208 South Linda Street, Hobart IN 7:00
PM Program Favorite/Least Favorite tools
October 3rd Executive Board Meeting at 7 PM at 2949 Willowcreek Rd, Portage
October 18th Committees Meeting at 2949 Willowcreek Rd, Portage 7:00 PM
October 27th Membership Meeting at 208 South Linda Street, Hobart IN 7:00 PM
November 15th Committees Meeting at 7:00 PM
November 17th Membership Meeting at 208 South Linda Street, Hobart IN 7:00
PM Toy Program
December 13th Committees Meeting at 2949 Willowcreek Rd, Portage 7:00 PM
December 15th Membership Meeting at 208 South Linda Street, Hobart IN 6:00
PM Christmas Party, Installation and Awards

A Lipped Box Lid



The easiest way to make a lidded box is to build the box and lid as one piece and then cut them apart on the table saw. This guarantees that the lid will be a perfect fit to the box. With a little modification, this same technique can be used to make a box and lid that mate with interlocking lips, as shown in the photo at right.

This technique for making a box lid is a little different in that you do part of the job before the box is assembled. A look at the two drawings will explain. To create the lip, you'll need to cut halfway through the sides from both the inside and the outside. As shown in Figure 1, the inside cuts are made while the box is still in pieces. Remember that this first cut will form the "high" side of the lip.



Once the box is assembled, you complete the job with a second series "halfway" cuts that are offset a blade's width ($\frac{1}{8}$ ") from the first (Figure 2). These cuts are positioned below the first cuts. If you hit it right, the lid will separate cleanly and after a little sanding, you'll have a snug-fitting, lipped lid.

For more helpful table saw tips and techniques, visit Plansnow.com.

Good Woodworking,

Ted Raife

Online Editor, *Woodsmith*

Bob Flexner's Finishing Tips

<http://www.thefinishingstore.com/>

Resistance of Dyes to Fading

All dyes fade much faster than pigment when exposed to bright light—sunlight and fluorescent light being the worst culprits. But some types of dyes fade faster than others.

The worst for fading are the natural vegetable dyes, such as walnut husks and berries. These were sometimes used centuries ago, but they were replaced in the late nineteenth century by “aniline” dyes.



Dyes Fading

These are usually acid or basic dyes derived from various chemicals. They quickly replaced natural dyes in the textile industry and then entered the woodworking industry. They are available to woodworkers today in powder form to be dissolved in a solvent, usually water.

In the middle twentieth century a new class of chemical dyes, called “metalized” or “metal complex” was developed. These dyes are usually packaged in liquid form and are more fade resistant than the powder dyes, but the range and richness of colors is somewhat inferior. These dyes are often marketed as fade resistant.

The left dye in the photo is Transtint metalized dye. The right dye is Lockwood aniline dye. Both are water-soluble. I covered the top half of the panel and put it in a west-facing window for six months. You can see that both dyes faded (on the lower areas) but the aniline dye faded more than the metalized dye.